



The IceBreak



enjoy the experience



The IceBreak

The superb "half height" compact can dispenser is the perfect choice to partner with a hot beverage machine from the DarenthMJS range thereby providing a cost effective, highly convenient and reliable solution to all your drink requirements.

Drink selection is simplicity itself by either pushing the brand prominent product on the traditional machine or the robust push button system above the animated LED illuminated display window on the NEW vandal resistant machine.

The chosen can is delivered at waist height, uniquely eliminating the need to reach down to floor level as with other machines



IceBreak partnered with the Style 5 hot drinks machine

Serves 5 selections of *ice cold* cans.

High visibility digital display, complete with scrolling messages and full audit facility.

Individual price setting for all products.


Fully automatic 'no fuss' refrigeration system with fully automatic defrost.




New ! Ice Blue graphics now available
Machine above shown fitted with illuminated and
vandal resistant window system




 IceBreak partnered with the Style5 hot drinks machine


 IceBreak partnered with the 1066 Auto hot drinks machine


 IceBreak partnered with the Refresh 700 hot drinks machine

Chosen product is delivered to the user at waist height.

Interfaces perfectly with the extensive range of DarenthMJS host machines.

Electronic temperature control, digitally programmable with fully automatic defrost system.

Available with original and much loved display pods, or NEW vandal resistant windows featuring animated LED lighting.

Incredibly user friendly, high capacity and feature packed.

Complimentary styling and suitable for either stand alone or slave applications.

The IceBreak by DarenthMJS is the perfect choice to partner with a hot drinks machine and provides a cost effective, highly convenient and reliable solution to all cold drink requirements. Incredibly simple to both refill and operate, all available products are displayed through crystal clear display "bubbles" to maximise brand impact and which the user simply pushes to have the chosen can delivered *ice cold* and at waist height.



Chosen can is delivered at convenient height

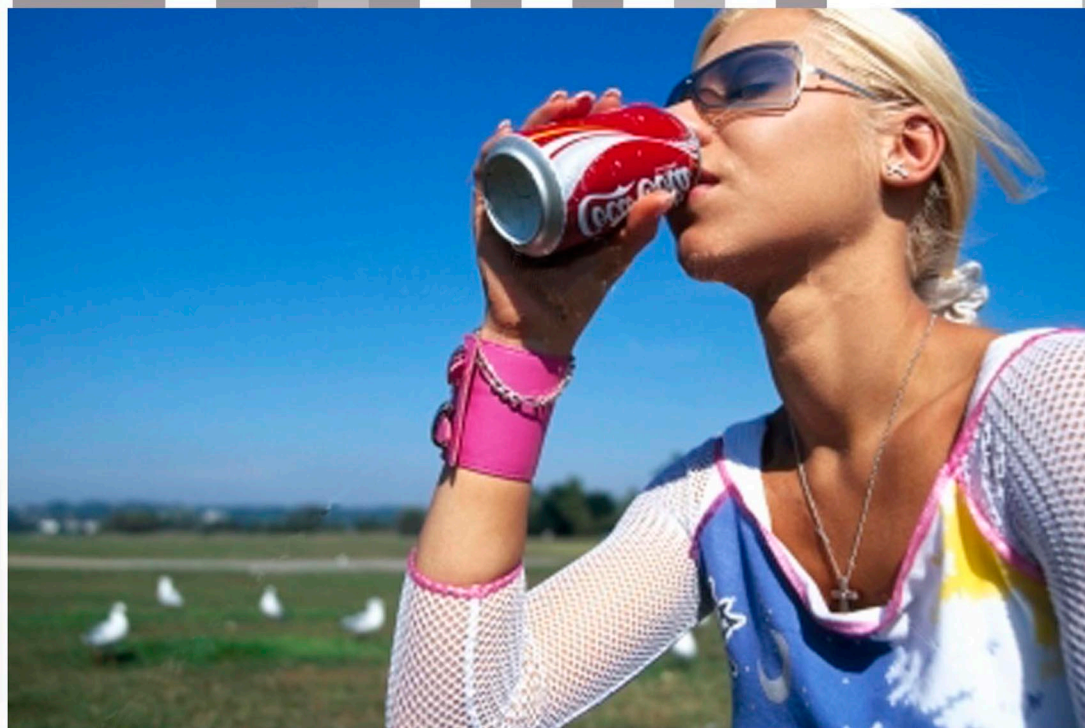


Easy fill, together with huge capacity of 135 cans



I-Key cashless payment system compatible (via host machine)

The IceBreak



TOTAL DESIGN & MANUFACTURE

PRODUCT CHOICE AND CAPACITY

Selections:

5 different cans, 330ml standard size.

Capacity:

27 cans per selection = 135 cans total.

Product Display:

COIN CONTROL

The IceBreak is primarily designed to perfectly compliment the entire range of DarenthMJS hot beverage machines and in this format operates as a slave to the hot machine, thereby utilising the same payment system.

Alternatively, the IceBreak is equally as capable of operating in a stand alone format and can be fitted with its own coin validator which accepts all coins.

High visibility digital display with scrolling messages and full audit trail facility.

Free vend master override switch.

I-Key cashless payment system compatible (via host machine).

POWER REQUIREMENTS:

220-240 V, 50 Hz, single phase.

120 W, 13 A plug fuse.

2 A fuse on back panel.

Machine fitted with 1.8 metre mains lead and power outlet for optional hot drinks machine (combination requires only one wall socket).



DIMENSIONS (WxHxD):

Machine: 780mm x 960mm x 685mm

(similar height to hot drinks machine base cabinet, which can be eliminated when the IceBreak is installed)

WEIGHT:

Empty Machine: 112Kg

For further information and advice on the extensive range of total refreshment solutions manufactured by DarenthMJS Limited, please contact your local authorised dealer.



DarenthMJS recommend and supply the complete range of EVERPURE water filtration technology.



DarenthMJS Ltd have a policy of continual improvement and reserve the right to modify and/ or change specifications without notice.

All dimensions and capacities shown are approximate and for guidance only. E & OE.

